

CMSC 250

Discrete Structures
8/30/2022

- Logistics
 - Course Structure
 - Syllabus
 - Getting Help

Resources

- Elms/Canvas
 - Official communications
 - Assignment notifications, etc.
- Gradescope
 - Submitting assignments
- Piazza (<https://piazza.com/class/l6ze3fp8v962u9>)
 - Question Forum
- <https://bakalian.cs.umd.edu/250>
 - Handy course information (office hours, TA emails, etc)

Course Structure

Schedule

Monday	Discussion
Tuesday	Lecture
Wednesday	Discussion
Thursday	Lecture
Friday	Homework Assigned
Saturday	
Sunday	Homework Due <i>(from 9 days ago)</i>

Course Structure

Graded things

Category	Worth (%)	Frequency/Quantity
Homeworks	20%	Weekly
Quizzes	15%	4-ish
Exams	40% (20% each)	2
Final	25%	1

Course Structure

Graded things

Assignment	Percentage	Date
Quizzes		
Quiz 1	3.75%	Sep 12
Quiz 2	3.75%	Oct 10
Quiz 3	3.75%	Nov 7
Quiz 4	3.75%	Dec 5
Exams		
Exam 1	20.00%	Sep 29
Exam 2	20.00%	Nov 3
Final	25.00%	TBD
HW		
Homeworks	20.00%	

Homeworks

Homeworks

- Submit on Gradescope
 - *Must* tag answers to receive credit!
 - First homework to practice this.
 - Feedback on Gradescope
 - Okay to collaborate but work/solutions must be your own.
 - Ungraded example problems published throughout semester.
-
- **NINE** days to submit. Wow!
 - Lowest **TWO** dropped. Wow!
 - **FIVE** 12hr last passes. Wow!

Homework Bonus

Small bonus if you use LaTeX to format solutions (as opposed to typing up or hand writing)

Quizzes

- Online (gradescope)
- Available at 8am day of quiz. Due at Midnight.
- Once started, have 2 hours to submit
- Must work independently.
- Tip:
 - Don't start at 10pm.
 - Plan for internet & submission issues.

Exams

- In class
- Lecture period

Re-grading

- 3 days to request after returned.

APPROXIMATE grading scale

Eg. if you finish with a 91, you won't get less than an A-

A+	>97
A	>93
A-	>=90
B+	>87
B	>83
B-	>=80
C+	>77
C	>73
C-	>=70
D+	>67
D	>63
D-	>=60
F	<60

Where to find information

- ELMS
 - Announcements, POSTING of homeworks, grades
- bakalian.cs.umd.edu/250
 - *Fast* way to find information
 - TA email addresses, discussion periods, **TA office hours**
- Piazza
 - Asking questions
- Gradescope
 - Submitting Homeworks,
 - receiving feedback

Getting Help

- TA Office Hours
- 1:1 tutoring & Guided Study Sessions ([Computer Science | UMD Tutoring](#))
- My Office Hours

TA Office Hours

When: TA office hours

bakalian.cs.umd.edu/250

Time(Eastern)	Monday	Tuesday	Wednesday	Thursday	Friday
9:00	Roksana	Yuxin	Yuxin	Yuxin Roksana (9:30)	Ali Radhika
10:00	Roksana Yuxin	Yuxin	Yuxin	Yuxin Roksana Ali	Ali Radhika
11:00	Aritrik	Yifan	Roksana	Roksana Ali Lucinda	Ali
12:00	Aritrik	Yifan	Elias	Roksana (12:30) Ali Sneha (12:30)	Ali
13:00	Aritrik Di	Yifan Sneha	Roksana	Ali Sneha	Ali Aritrik
14:00	Aritrik Yifan	Sneha Sungbok (V)	Lucinda	Sneha Lucinda	Ali Aritrik
15:00	Yifan	Sneha Yancheng (15:30)	Sneha Sungbok (15:30)	Sneha Hitaansh	
16:00	Aritrik Yancheng	Sneha (16:30) Yancheng Sungbok (16:30)	Sneha (16:30) Sungbok Yancheng (16:30)	Sneha (16:30) Yancheng	Lily Hitaansh
17:00		Yancheng Sungbok	Sungbok Yancheng	Yancheng	Lily
18:00		Yancheng Sungbok	Sungbok Yancheng	Yancheng	

Zoom Links for Virtual Office Hours

Hitaansh

[zoom link \(https://umd.zoom.us/j/6324554110\)](https://umd.zoom.us/j/6324554110)

When: TA office hours

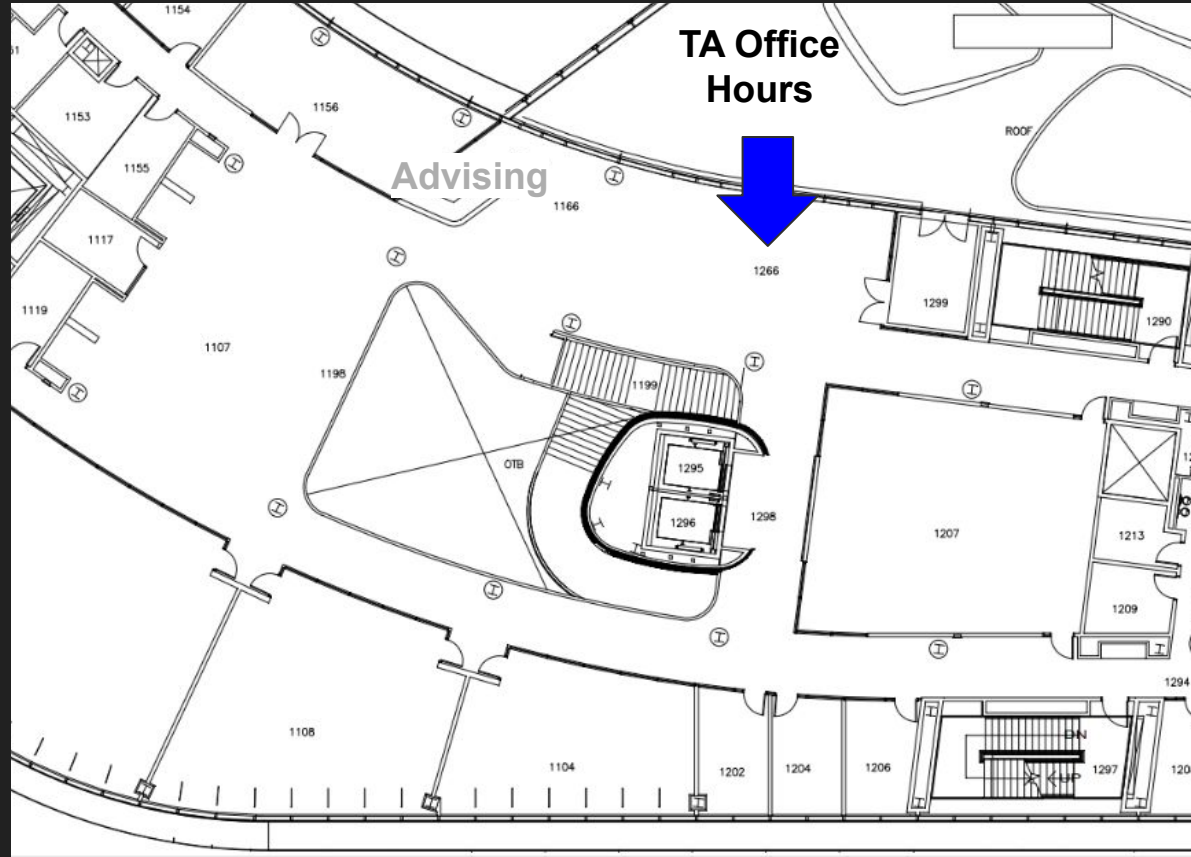
bakalian.cs.umd.edu/250

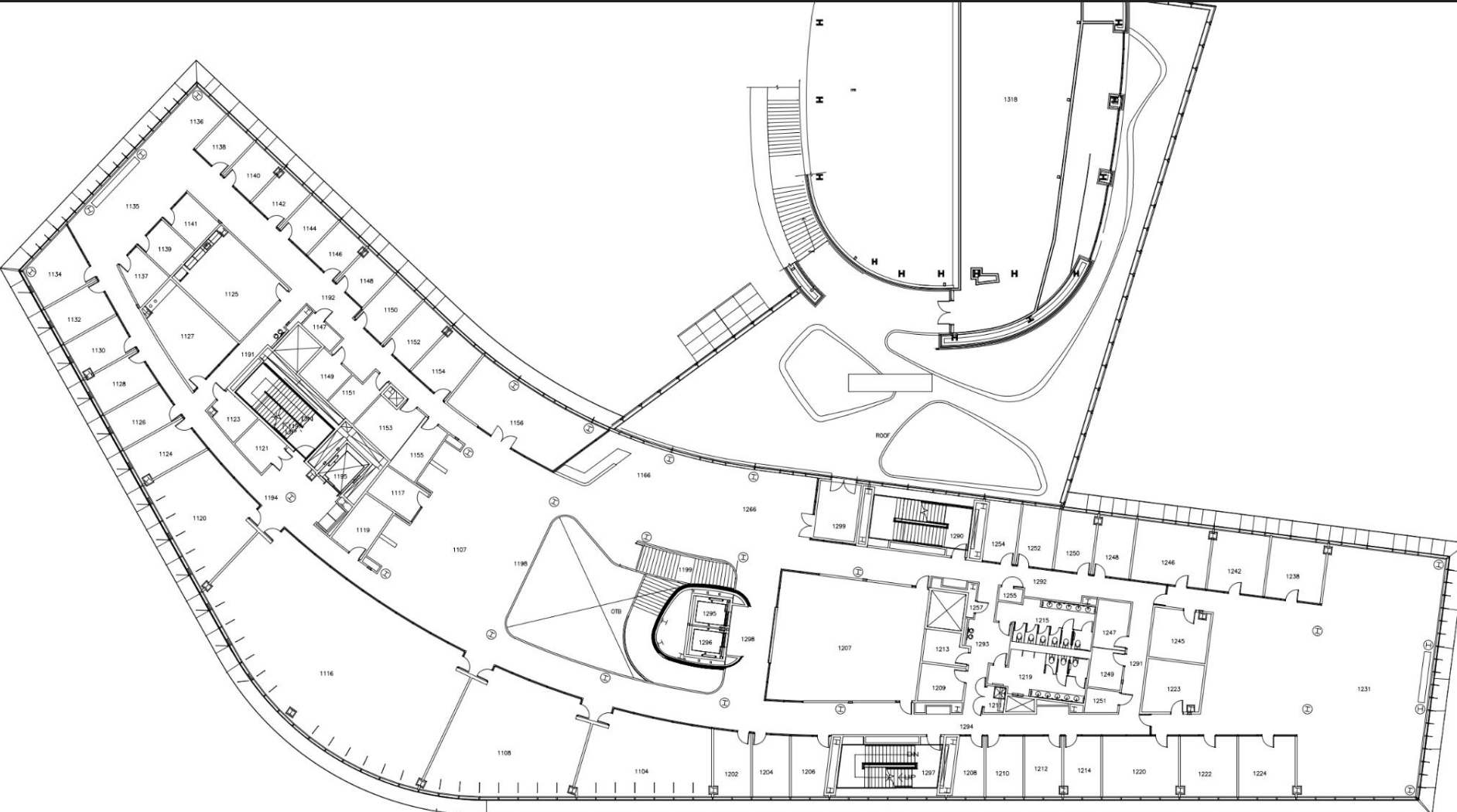
Changes to be reflected ^

Monday	9am-5pm
Tuesday	9am-7pm
Wednesday	9am-7pm
Thursday	9am-7pm
Friday	9am-6pm
Saturday	
Sunday	

Where: TA office hours

- IRB 1266 (first floor, up ONE set of stairs/elevator)





1:1 Tutoring & Guided Study Sessions

1:1 Tutoring & Guided Study Sessions

- Provided by Iribe Initiative for Inclusion and Diversity in Computing
 - Great for content, can't help with specific assignments
- To sign up: <https://inclusion.cs.umd.edu/programs>

My Office Hours

When: My Office Hours

- Right after this class
- By (virtual) appt when necessary (email me)

Where: My Office Hours

- My office
- Location: IRB 2220

Syllabus

<https://bakalian.cs.umd.edu/250/syllabus>

- Topics
- Absences
- Academic Integrity
- Pronouns
- Disabilities
- Basic Needs Security
- Veteran Resources
- Course Evals
- Changes

Resources

- Elms/Canvas
 - Official communications
 - Assignment notifications, etc.
- Gradescope
 - Submitting assignments
- Piazza (<https://piazza.com/class/l6ze3fp8v962u9>)
 - Question Forum
- <https://bakalian.cs.umd.edu/250>
 - Handy course information (office hours, TA emails, etc)

FAQ

Q: What if I need help with a topic?

A: You have a number of options:

- Optional Book
 - *Discrete Mathematics with Applications* by Susanna S. Epp
- Ask a friend
- Ask a question in Piazza (anonymous is possible)
- Ask a TA in office hours
- 1:1 tutoring
- Last resort! Email [CMSC250] in subject line.